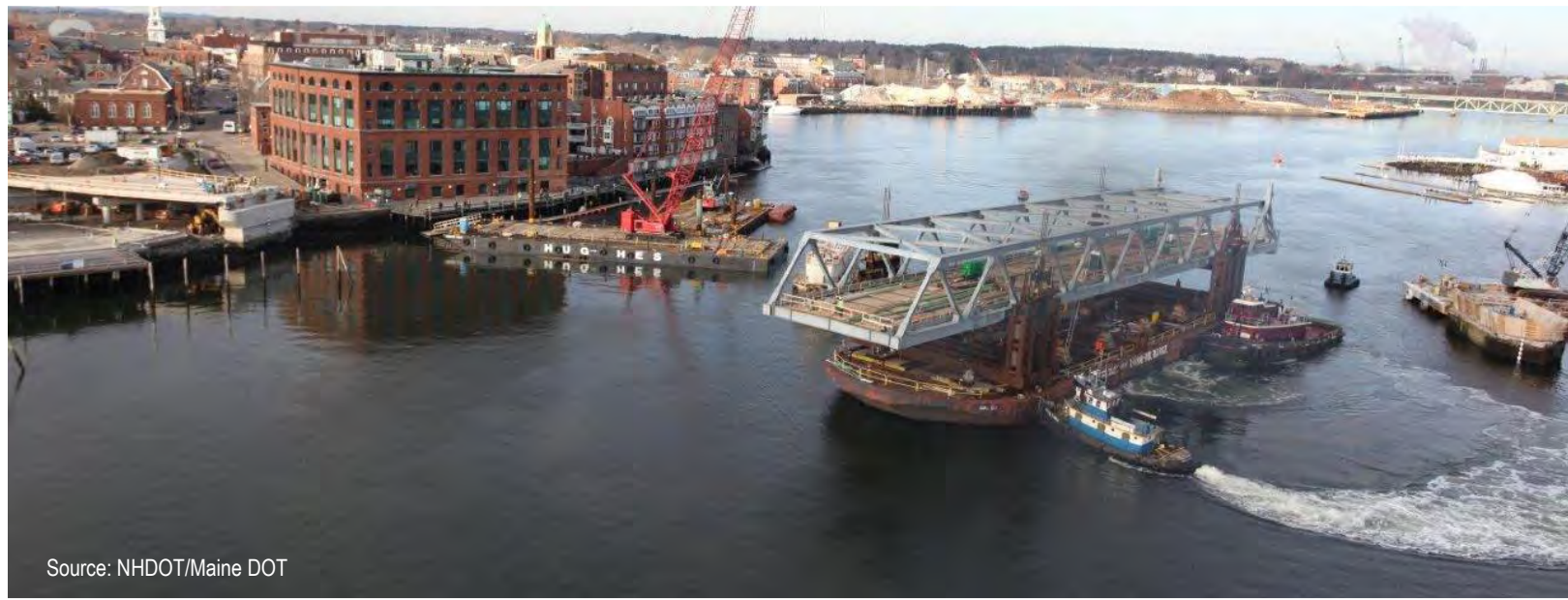


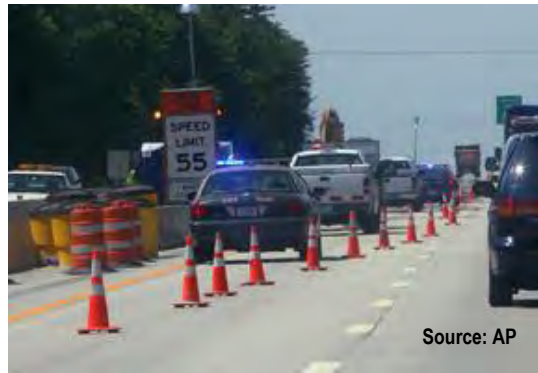
# Annual Listing of Obligated Projects

## FY 2015

October 1, 2014 – September 30, 2015



Source: NHDOT/Maine DOT



Source: AP



Source: COAST



Source: NH DOT

ROCKINGHAM  
  
PLANNING  
COMMISSION

156 Water Street  
Exeter, NH 03833  
603.778.0885(p)  
[www.rpc-nh.org](http://www.rpc-nh.org)

# RPC Region

## 2010 Census Population

- Interstate Highways
- State Routes
- RPC Communities
- NH Communities (outside RPC)

Base Features (transportation, political and hydrographic) were automated from the USGS Digital Line Graph data, 1:24,000, as archived in the GRANIT database at Complex Systems Research Center, Institute for the study of Earth, Oceans and Space, University of New Hampshire, Durham, NH, 1992-2012. The roads within the Rockingham Planning Region have been updated by Rockingham Planning Commission and by NH Department of Transportation through ongoing efforts. RPC makes no claim to its completeness or

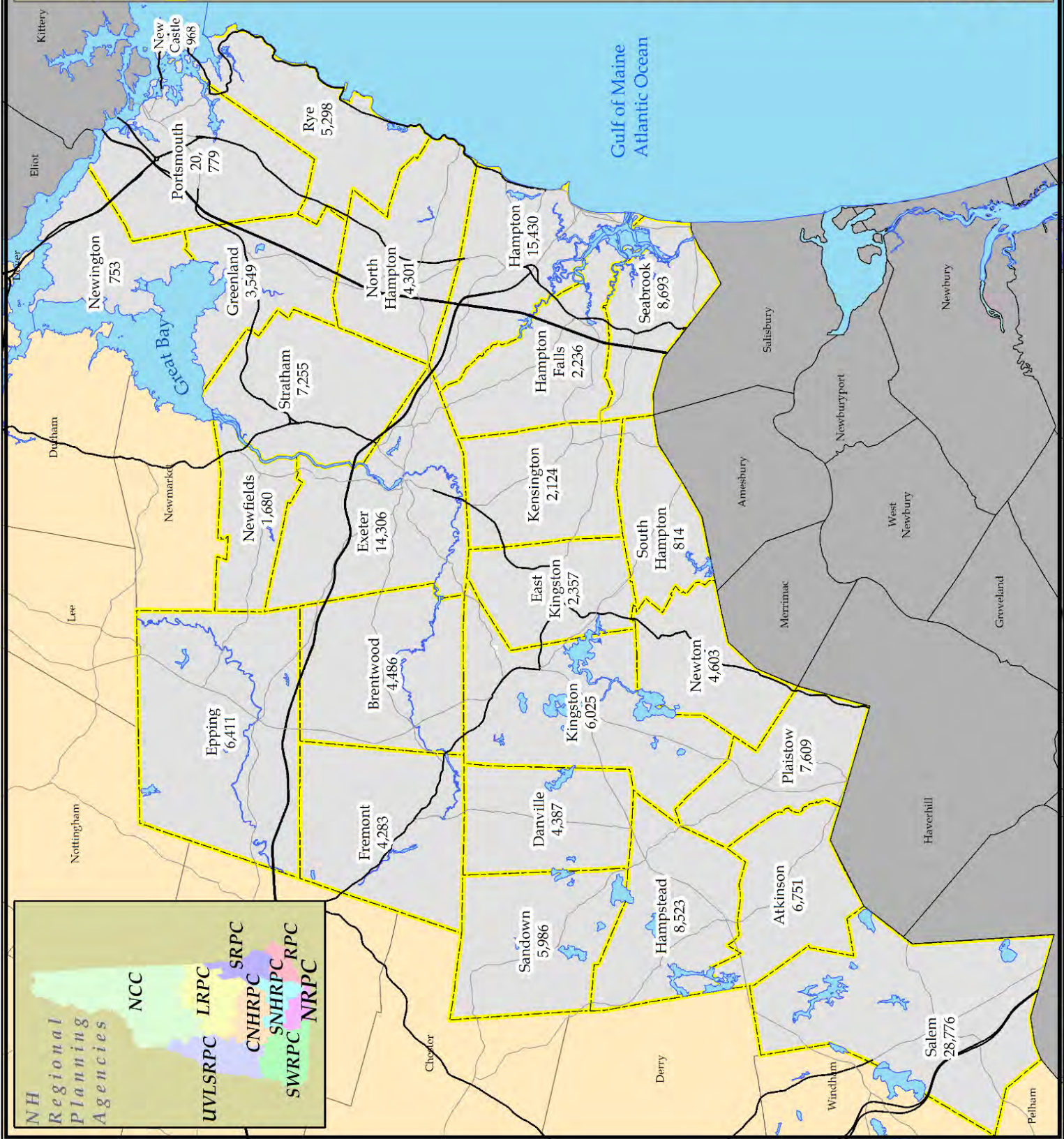
Town Name  
Population

ROCKINGHAM  
PLANNING  
COMMISSION

NH GRANIT

DOT  
New Hampshire

0 0.5 1 2 3 4  
Miles



NH Regional Planning Agencies

NCC

UVLSRPC

LRPC

SNHRPC

SNHRPC

SNHRPC

SWRPC

NRPC

SRPC

## Purpose of this Report

The Annual List of Obligated projects report is a requirement of the **Moving Ahead for Progress in the 21<sup>st</sup> Century (MAP-21)** legislation enacted by Congress on July 6, 2012. This document responds to the MAP-21 directive, and lists all transportation projects in the Rockingham Planning Commission region to which federal funds were obligated during federal fiscal year 2015 (FY15) between October 1, 2014 and September 30, 2015.

FHWA defines “obligated” as “*the federal government’s legal commitment (promise) to pay or reimburse the states or other entities for the federal share of a project’s eligible costs*”.<sup>1</sup> It is the commitment to reimburse an entity (usually the New Hampshire Department of Transportation or a transit agency) the incurred costs for an approved project during the fiscal year. This reimbursement can be for projects that have been initiated in previous years or will not be completed until future years and the final cost of a project may be different from the amount obligated as well. Funding can also be “deobligated” for projects in response to lower than expected costs, project cancellation, or other factors, and these released resources are often redirected to other projects.

## Background

The Rockingham Planning Commission is designated as the Metropolitan Planning Organization (MPO) for the 26 community area of southeastern New Hampshire shown in the accompanying map. The Region extends from Salem in the west to Portsmouth and Newington in the east and includes communities along the I-93, I-95, NH 101, and NH 125 corridors. The MPO has responsibility for planning, programming, and coordinating federal investments and works in partnership with the communities, the New Hampshire Department of Transportation (NHDOT) and New Hampshire Department of Environmental Services (NHDES), as well as the Federal Highway (FHWA) and Transit (FTA) Administrations and regional transit operators in planning for transportation improvements.

---

*Publication of Annual Listings of Projects:*

*“An annual listing of projects, including investments in pedestrian walkways and bicycle transportation facilities, for which Federal funds have been obligated in the preceding year shall be published or otherwise made available by the cooperative effort of the State, transit operator and metropolitan planning organization for public review. The listing shall be consistent with the categories identified in the TIP.”*

*- 23 U.S.C. 134(j)(7)(B) and 49 U.S.C. 5303(j)(7)(B)*

---

## Long Range Plan (Plan)

The 2040 Regional Long Range Transportation Plan, last updated and approved in December 2014, identifies transportation needs and investment priorities for the RPC region over a 20+ year planning horizon. The Plan outlines policies addressing all modes of surface transportation, including highways, rail, transit, cycling, and walking. The Plan is fully updated every four years, with minor adjustments occurring as necessary. The Plan is required by Federal law to be fiscally constrained meaning that the projects

---

<sup>1</sup> Financing Federal Aid Highways Glossary. <http://www.fhwa.dot.gov/reports/financingfederalaid/index.htm> March, 2007.

identified as being necessary can be achieved with the resources that are expected to be available. Projects must be included in the fiscally constrained portion of an adopted Long Range Plan before they can be selected for Transportation Improvement Program (TIP) funding.

**Transportation Improvement Program (TIP)**

The Transportation Improvement Program (TIP) is a multi-year program of regional transportation improvement projects scheduled for implementation in the MPO area in the near future. The current TIP covers the Federal fiscal years from 2015-2018 and must include all transportation projects within the MPO area proposed for federal funding, as well as any regionally significant project that require a federal action such as large, state-funded, turnpike expansions. Projects listed on the TIP must be consistent with the MPO's Transportation Plan, and the TIP itself must be found to conform to the State Implementation Plan (SIP) for air quality attainment. Under conformity rules, "consistent with" the transportation plan is interpreted to mean that TIP projects must be specifically recommended in the Plan. The TIP is prepared by MPO staff and is reviewed and endorsed by the MPO Technical Advisory (TAC). Final TIP endorsement is received from the Planning Commission acting as the MPO Policy Committee. The 2015-2018 TIP was adopted by the MPO in December, 2014 and has been amended once since approval. The obligated projects listed in this report come from the 2015-2018 TIP as well as from previous TIPs.

**Public Involvement**

The Rockingham Planning Commission aims to proactively engage the public in the regional transportation planning process and embraces federal requirements that MPOs provide the public with complete information, timely public notice, full public access to key decisions, and early and continuing involvement in developing the Long Range Plan, TIP, and other documents. The Commission’s public involvement strategies include presenting information and educating the public, continually soliciting public input, helping information flow between the public and decision makers, and considering and responding to public concerns.

**Summary of Obligated Projects**

*Table 1* shows that just under **\$79 million** of Federal Highway Administration funding was obligated transportation planning, design, and construction projects within the region. Another **\$11.4 million** was obligated to “Statewide” programs and projects, which are funds used throughout New Hampshire and are not distributed at the regional level. Additionally, approximately **\$16 million** of Federal Transit Administration funding was committed for expenditure in the Rockingham

**Table 1: Federal Obligated Funding Totals**

Project Type	Federal Highway	Federal Transit	Total
Regional Projects	\$78,915,788	\$16,001,952	\$94,917,740
Statewide Projects	\$11,369,702	\$0	\$11,369,702
<b>Total Obligated</b>	<b>\$90,285,490</b>	<b>\$8,909,503</b>	<b>\$106,287,442</b>

Planning Commission region during Fiscal Year (FY) 2015 on transit operations for COAST, CART, and UNH Wildcat Transit, the three agencies that provide transit service within the region.

During FY2015 the state applied “turnpike toll credits” to most projects using federal funding essentially replacing State matching funds with Federal dollars. This falls under a provision of MAP-21 (and its predecessor SAFETEA-LU) which allows for the replacement of State and local funding with credits earned from spending non-federal funds on State owned turnpikes.<sup>2</sup> The result is that the Federal funding that New Hampshire receives for transportation projects cannot be used for as many projects as it is covering 100% of project costs instead of the typical 80% matched with 20% state or local funding.

**Table 2: Obligated Project Status Summary**

Status	Regional Project		Statewide Program		Transit Grants*	
	Contracts		Contracts			
Active	37	70%	51	54%	22	100%
<b>Complete</b>	<b>13</b>	<b>25%</b>	<b>42</b>	<b>44%</b>	<b>0</b>	<b>0%</b>
Withdrawn	3	6%	2	2%	0	0%
Total	53		95		22	

\* Federal Transit Administration grants are intended for covering operating and capital costs for multiple fiscal years (year of award plus 3 minimum) and generally only close when the funds have been fully expended.

*Table 2* summarizes the status of the regional project contracts, statewide projects, and transit grants in terms of “Active”, “Complete”, or “Withdrawn” and these terms are further defined below. In general, contracts are considered “Complete” only after they have been closed out with a financial audit and final vouchers have been issued. As

summarized in *Table 2*, there were **53 contracts active on 36 projects** in the region during FY15 and of those, **13 (25%) were completed** and closed out while **40 (70%) remain active** in some manner. Another 10 contracts (designated in *Table 3* as “Active\*”) finished construction but have not met all of the requirements to be considered complete for the purposes of this analysis. Three projects were withdrawn and will not be constructed at all.

For the Statewide Programs, **42 of the 95 contracts** have been closed out and completed (44%) while a small percentage (2% or 2 contracts) have been withdrawn. The higher completion percentage reflects that many of these are annual programs for a particular fiscal year and work concludes on them with the end of the particular year.

Transit grants are available for 4 years (year of award +3 years) and currently all **22 FTA grants** totaling just over **\$16 million** to COAST, CART, and Wildcat Transit remained open and active during FY15.

The replacement of the Sarah Mildred Long Bridge on the US 1 Bypass in Portsmouth is the largest project that actively obligated funds during FY15 at just over \$30 million and 38% of the regional total. In recent years, the I-93 expansion project between Salem and Manchester has been the largest project in the region

<sup>2</sup> [https://www.fhwa.dot.gov/ipd/finance/tools\\_programs/federal\\_aid/matching\\_strategies/toll\\_credits.aspx](https://www.fhwa.dot.gov/ipd/finance/tools_programs/federal_aid/matching_strategies/toll_credits.aspx)

however, as work has progressed northward and out of the RPC region, the project has dropped to being the second largest using federal funds in the region. The \$23.8 million obligated for this project during FY15 accounts for 30% of net FHWA obligations in the region and primarily was utilized in corridor-wide contracts such as the roadside service patrol and design and engineering services. The other 34 active projects in the region account for the remaining 32% of the obligated funds for regional projects as well as the bulk of the funding deobligated from the program. There were 15 contracts where a total of nearly \$900,000 in federal funding was deobligated and will be repurposed to other transportation projects in the state.

## Reading the Obligation Reports

*Table 3* shows regional roadway related projects organized by the community or communities in which the project occurs, and each project lists the Identification number (Project #), a brief scope of work, total funding allocated, federal funding obligated, and the current status. Projects are sponsored by NH DOT unless otherwise specified. *Table 4* shows the statewide programmatic projects in the same format. The following definitions apply:

- **The Location** provides the community or communities where the project is occurring. Some projects are statewide or regional in nature and do not have any communities listed.
- **The Project #** is a unique number given to each project that is included in the MPO TIP and the State Transportation Improvement Program (STIP).
- **The Scope of Work** lists the description of the intent of the project as published in the TIP/STIP as well as providing more specific information on the location of the project, including the route on which work is to occur.
- **The Current Status** lists projects either as “Active”, “Completed”, or “Withdrawn”. “Active” means that a contract has been signed between the Federal Highway Administration and NH DOT that obligates the two agencies to complete and pay for the project as established in the project description, and that work on some phase of the project is proceeding. Projects that have been constructed but are still considered “Active”, are denoted with an asterisk added [“Active\*”]. For the purposes of this report, a “Completed” project is one where the work has been finished and approved for final payment by FHWA to reimburse the State for the federal share of the cost set in the project agreement. Projects are considered “Withdrawn” when the project has been inactive long enough to have the obligated funds lapse, or has been actively discontinued by NHDOT or the community.
- **The Federal Funds Obligated** are the total Federal funds applied to the project during the fiscal year. Some projects show negative obligation amounts and this indicates that money was removed from the project and released for use on other transportation projects. This could mean one of several things:

- A completed project came in under budget
- An active project been delayed after the money had been committed.
- A project has been cancelled
- A project has been impacted by congressionally mandated rescissions, or reductions in the funding available to spend on projects.

**Tables 5, 6, and 7** show CART, Wildcat Transit, and COAST grant projects respectively and are listed by the FTA Grant number. Projects are sponsored by the respective transit agency and the following definitions apply:

- **The FTA Grant #** is a unique number given to each agency for each FTA grant that is included in the MPO TIP and the State Transportation Improvement Program (STIP).
- **The Project Description** states what the funding was utilized for as published in the TIP/STIP.
- **The Current Status** lists projects either as “Active” or “Closed”. “Active” means that a contract has been signed between the Federal Transit Administration and the regional transit agency that obligates FTA to pay them for each project as established in the project description. For the purposes of this report, a “closed” project is one where the funds have been fully expended and approved for final payment by FTA to reimburse the transit agency for the federal share of the cost set in the project agreement.
- **The Federal and Local obligation amounts** show Federal funding totals during the fiscal year and the matching local funds. The total column shows the sum of these two amounts.

**Table 3: Status of Regional Projects**

Location/ Project #	Scope Summary	Status	Obligated Funds
<b>Candia-Epping [NH 101]</b>			
26606	TW inlay from 150' west Candia/Raymond to 250' east Raymond/Epping	Active*	\$ 6,697,324
<b>Exeter [Lincoln Street]</b>			
16045	Restoration of baggage building at train depot on Lincoln Street	Withdrawn	\$ (3,069)
<b>Exeter [NH Route 111 (Kingston Road)]</b>			
40436	Widen shoulders to 5' on Kingston Road (NH Route 111) for approximately 1.1 miles. (14-26 TAP)	Active	\$ 18,800
<b>Exeter - Hampton [NH 101]</b>			
14922	NH 101; Resurfacing, guardrail & drainage upgrades	Active*	\$ (15,986)
28535	Median Barrier protection from Exeter/Brentwood T/L east to approx. 1 mile east of I-95	Active*	\$ 3,182,833
<b>Hampton [Centre Elementary School, Marston Elem School, and Hampton Academy]</b>			
15541	Evaluation for the Centre Elem School in Hampton. Non-Infrastructure	Complete	\$ (1,705)
26807	Centre School, Marston Elem School & Hampton Academy - Startup Activities - Non-Infrastructure	Withdrawn	\$ -
<b>Hampton [NH 1A]</b>			
14188	Bridge Rehab, replace deck/fender system over Hampton River- 235/025	Complete	\$ (97,755)
<b>Hampton - Portsmouth [Hampton Branch Rail Corridor]</b>			
26485	Purchase rail corridor from Hampton to Portsmouth approximately 9.7 miles and improve trail surface.	Active	\$ 3,190,000
<b>Hampton Master Plan [NH 1A/Ocean Blvd/ Ashworth Ave.]</b>			
23821	Update to transportation element of the Hampton Beach Area Master plan.	Active	\$ 220,000
<b>Hudson - Hampstead [NH Route 111]</b>			
24518	Install centerline and shoulder rumble strips/stripes along NH Route 111	Complete	\$ (100,468)
<b>New Castle [NH 1B]</b>			
14827	Construct multi-use path along NH 1B from the Wentworth Hotel to Wild Rose Lane.	Complete	\$ (4,350)
<b>New Castle - Rye [NH 1B]</b>			
15624	Replacement of Concrete Pile Encasement - 066/071	Complete	\$ (322,859)
16127	Bridge replace, Single Leaf Bascule Bridge, NH 1B over Little Harbor (Red List) Br No 066/071	Active	\$ 22,000
<b>Plaistow [Garden Road]</b>			
14390	Bridge Replacement-Garden Rd over Little River-Br. #118/053	Complete	\$ -
<b>Plaistow [NH 121A]</b>			
15654	NH 121A rehab 103"x71" CMP & install overflow pipe for Kelly Brook under 121A, 4350' north of NH 125	Complete	\$ (51,003)
<b>Plaistow [NH 125]</b>			
10044G	Reconstruct NH 125, from East Road to Old Road	Active	\$ 7,782,496



**Table 3: Status of Regional Projects**

Location/ Project #	Scope Summary	Status	Obligated Funds
<b>Plaistow [Pollard Elementary School]</b>			
28755	Pollard Elementary School - Ped/Bike Improvements - Infrastructure	Withdrawn	\$ (19,329)
<b>Plaistow Kingston [NH 125]</b>			
10044K	NH 125 Reconstruction East Road, Plaistow northerly approximately 6.0 mile to Main St. Kingston.	Active	\$ 550,000
<b>Portsmouth [Daniel Street]</b>			
13903	Daniel Street Piscataqua Riverwalk and wharf/pier construction adjacent to Memorial Bridge(13678F)	Active	\$ 230,180
<b>Portsmouth [Grafton Drive]</b>			
14417	Construct a multi-use path along Grafton Dr. between NH Avenue and Portsmouth Transportation Center and Airport Rd.	Active*	\$ 14,151
<b>Portsmouth [NH 1A]</b>			
14493	NH 1A Bridge Replacement over Sagamore Creek - 198/034 [MOBRR-221] {Municipal Bridge Program}	Active*	\$ 95,182
<b>Portsmouth [NH 33 (Old NH101)]</b>			
10665	Replace Bridge over B & M RR - 154/101	Active*	\$ 20,000
<b>Portsmouth [NH33/Grafton Dr.]</b>			
20222B	Re-stripe existing lot & minor widening to accommodate immediate need for East-West Express service	Active*	\$ 38,693
<b>Portsmouth [US 1 Bypass]</b>			
13455	US 1 Bypass: Replace bridges along US Route 1 Bypass	Active	\$ 941,918
13455B	US 1 Bypass: Replace Middle Road & Islington Street Bridges over the Bypass	Active*	\$ 8,039
13455C	US 1 Bypass: Replace Maplewood Avenue Bridge over Bypass	Active	\$ 111,778
<b>Portsmouth [Safe Routes to School]</b>			
15338A	Evaluation, Education, Encouragement and Enforcement Activities; Non-Infrastructure	Complete	\$ (6,375)
28757	Bicycle lanes on Lafayette Road and Middle Street.	Active	\$ 32,290
<b>Portsmouth - Kittery [US 1, US 1 Bypass, I-95]</b>			
13678D	Quality assurance shop inspection contract for the Memorial Bridge Project 13678F	Active*	\$ -
13678E	Transportation need study for Memorial Bridge, Sarah Long Bridge, and High-level (I-95) bridge over Piscataqua river	Complete	\$ -
13678H	Preparation of the National Register Historic District Nomination for Portsmouth Downtown District	Active	\$ 55,000
<b>Portsmouth, NH - Kittery, ME [US 1 Bypass]</b>			
15731	Bridge Replacement, US 1 Bypass over Piscataqua River (Sarah Mildred Long Bridge) (Red List)	Active	\$ 30,031,421
15731B	Provide Steel Barrier across Sarah Mildred Long Bridge	Complete	\$ (336)
<b>Salem [Manchester &amp; Lawrence Rail Corridor]</b>			
16031	Multi-Use Trail improvements in Windham and Salem [09-47TE]	Active	\$ 869,920

**Table 3: Status of Regional Projects**

Location/ Project #	Scope Summary	Status	Obligated Funds
<b>Salem [Pleasant Street]</b>			
13518	Signal Coordination from North Policy Rd west to Stiles Rd.	Complete	\$ -
<b>Salem to Manchester [I-93]</b>			
10418L	Implement and provide operational support for expanded commuter bus service	Active	\$ 540,000
10418T	Corridor Service Patrol (Salem to Manchester)	Active	\$ 100,000
10418U	Demolish buildings on two parcels adjacent to I-93.	Complete	\$ (7,958)
10418X	Final Design (PE) and ROW for I-93 Salem to Manchester corridor post September 4, 2014	Active	\$ 4,384,814
13933D	Mainline, Exit 1 to STA. 1130 & NH38 (Salem), Includes bridges 073/063 & 077/063 {Both Red List}	Active*	\$ 1,208,596
13933E	Exit 2 Interchange reconstruction, including I-93 Mainline & NH97, Includes bridges 068/078 & 070/079	Active*	\$ 6,138,310
13933Z	I-93 Corridor wide smart work zone	Active	\$ 209,000
14633Z	Corridor Smart Work Zone	Active	\$ 1,100,000
14800A	Mainline, Exit 1 to STA. 1130 & NH38 (Salem), Includes bridges 073/063 & 077/063 {Both Red List} – Debt Service project for 13933D	Active	\$ 1,208,596
14800E	I-93 Exit 2 Interchange reconstruction & Pelham Rd - Debt Service project for 13933E (Salem)	Active	\$ 6,138,310
10418V	Final design services for PE & ROW	Active	\$ 1,420,760
14800H	Final design services for PE & ROW	Active	\$ 1,420,760
10418Z	ITS field device deployment for TMC Operations	Complete	\$ (19,773)
<b>Seabrook To Portsmouth [Blue Star TPK (I-95)/ Spaulding TPK]</b>			
11151E	ITS field device deployment for TMC Operations	Active	\$ 931,816
<b>Seabrook-Hampton [NH 1A]</b>			
15904	Removal of lead based paint, rehab & recoat of steel stringers over Hampton River - [BRPPI*6601]	Active	\$ 110,000
<b>Seabrook-Hampton Falls-Hampton [Route 1]</b>			
40424	Resurfacing on US 1 in Seabrook from MM 1.8 to Hampton MM 5.2 including the 101 interchange.	Active	\$ 187,000
<b>Stratham [NH 33 / NH 108]</b>			
27771	Pedestrian and Bicycle improvements in the village district	Active	\$ 356,770
Total Obligated Funds			\$ 79,811,896
Total De-obligated Funds			\$ 896,108
<b>Net Obligated Funds</b>			<b>\$ 78,915,788</b>

\* Asterisk denotes project where construction work is complete (or largely so) but the contract has not been closed out completely

**Table 4: Status of Statewide Programs**

Location/ Project #	Scope Summary	Status	Obligated Funds
Statewide [All State Routes]			
12223T	Statewide Pavement Marking Program	Active	\$1,760,000
12223U	Statewide Pavement Marking Program	Active	\$1,639,990
40473	Statewide Crackseal Tier 2A Preservation	Active	\$110,000
29304	Interstate Sign Replacement Project	Active	\$619,430
P8903S	Recreational Trails Fund Act-Projects selected for 2014.	Active	\$418,436
14354	Alt. Fuel Vehicle Project (AFVP) to provide incremental costs of AFVS and 70% Inf. costs	Active	\$0
12223S	Annual Pavement Marking Program	Complete	\$0
14265	Creation of a Transportation Management Center and Program Software	Complete	(\$22,160)
14058B	Statewide Transportation Systems Management & Operations, ITS Technologies, CARS-511 Traveler Info	Active	\$250,000
10344L	Local Technology Assistance Program (LTAP) Administered by the Technology Transfer Center at UNH	Complete	(\$0)
12223P	Statewide pavement marking	Complete	\$0
15609F	Statewide Bridge Rehabilitation, Painting, Preservation & Improvement performed by Bridge Maintenance	Active	\$1,500,000
16015	AASHTOWARE: SafetyAnalyst software and hardware purchase for use with roadway video attributing intersections & ramps for Crash Analysis [HSIP*6767] {Highway Safety Improvement Program}	Complete	\$0
16344C	Post construction haz mat	Complete	(\$6,324)
16344E	Post construction monitoring of contaminate projects [HAZMAT]	Active	\$30,800
16344F	Post construction monitoring of contaminate projects [HAZMAT]	Active	\$0
16454	Statewide Pavement Markings - Minor Collector Roads [HSIP*6767]	Complete	(\$3,877)
16479	ESRI consultation and development of crash location tools	Complete	(\$6,119)
21647	Construction of warning signs and delineation on horizontal curves in District 6 [HSIP *6767]	Complete	(\$42,394)
22193	Crackseal/Preservation treatments of various state routes that are good candidates in districts 2-6	Active	\$889,450
22353	Installation of rumble strips along various state roadways	Complete	(\$31,335)
24502	Installation of Rumble Strips along State Roadways	Complete	(\$70,112)
26484	To promote a Highway safety culture through development and implementation of a statewide project	Active	\$264,000
27082	AASHTOWARE: Safety Analyst Software [HSIP *6767]{Highway Safety Improvement Program}	Active	\$27,500
27993	AASHTOWare SafetyAnalyst yearly license fee of \$25,000	Complete	\$0
28513	Installation of centerline and shoulder rumble stripes along State roadways.	Active	\$22,000
29137	Underwater inspection of various bridges located throughout the state.	Active	\$46,750
29551	Development of a statewide risk-based transportation asset management plan (TAMP).	Active	\$429,000
29342	Upgrading all signalized intersections with retroreflective backplates.	Active	\$3,164
29342A	Retrofit approximately 100 signalized intersections with retroreflective backplates. Phase I	Active	\$525,531
27592	Pedestrian Signal replacement and retiming (ISIP)	Active	(\$263,324)
15610	Installation of Road and Weather Information Systems (RWIS)	Active	\$33,000
40438	Protective Devices Replacement	Active	\$584,419
16258	Various Routes, Replacement of Substandard Cable Guardrail and F Terminal Units Throughout the State	Complete	(\$158,368)
28655	Replacement of Substandard "F" Terminal units In District 4 and District 5.	Active	\$27,500

**Table 4: Status of Statewide Programs**

Location/ Project #	Scope Summary	Status	Obligated Funds
15950	Statewide FY 2010 USGS digital aerial imagery acquisition and data management	Complete	\$0
24419	Statewide Complex Bridge Inspection and Bridge Inspection Manual, HTA	Active	\$275,000
23961	HSIP low cost safety improvements at spot locations	Withdrawn	(\$55,000)
10344M	Local Technology Assistance Program (LTAP) administered by the Technology Transfer Center @ UNH	Active	\$518,347
29173	Statewide Rest Area and Welcome Center Study	Active	\$288,647
12229	Develop & implement marketing campaign for rideshare & upgrade rideshare database software [94-03CM]	Complete	(\$40,121)
12563S	Statewide Department Training (TRAIN \$)	Active	\$135,355
40014	Acquisition of 2015 statewide USGS aerial imagery and services for delivery and quality control.	Active	\$330,000
26524	To promote a Highway safety culture through development and implementation of a Teen Driving program	Active	\$110,000
10336R	To provide supportive services to expand the DBE program	Active	\$0
10336T	To provide DBE supportive services and establish a Business Development Program	Active	\$0
20248	Software & hardware for an transportation management system (ATMS) and traveler information system	Active	\$109,800
27022	Vendor Maintenance of Statewide ITS devices	Active	\$110,000
10336S	To provide supportive services for the OJT program	Active	(\$36,136)
10336U	Withdraw project and deobligate funds for the OJT Program.	Active	(\$37,448)
15883	Placement of Warning Signs	Complete	(\$22,978)
16425B	2013 for the NHDOT/FHWA TRAC Program being developed and implemented by NHDOT.	Complete	(\$21,187)
16425C	FY 2014 for the NHDOT/FHWA TRAC Program being developed and implemented by NHDOT	Complete	(\$14,531)
16425D	FY 2015 for the NHDOT/FHWA TRAC Program being developed and implemented by NHDOT (TRAC money)	Active	\$14,300
16425E	FFY 2016 TRAC Program	Active	\$10,500
<b>Statewide [District 5 Horizontal Curves (Urban)]</b>			
28138	Horizontal curve signing project - Two lane urban roads in D5	Active	\$188,366
<b>Statewide [NH 101 and I-293]</b>			
16445	Median Protection Project on Interstate style highways. 100% HSIP Federally Funded	Complete	(\$21,809)
<b>Statewide [Traffic Signal]</b>			
14816	PE only	Complete	\$0
<b>Statewide - SPR</b>			
26782	2014-2015 Statewide Planning and Research, Part 1, Program	Active	\$1,350,000
14282V	Research - Developing	Complete	(\$18,409)
15680I	Research SPR II	Complete	(\$6,191)
15260B	Implementation of research and technology	Complete	\$0
15262B	Research Project	Complete	\$0
15680H	Research-Evaluation of urethane foam as a means of differential frost heaving mitigation	Complete	(\$50)

**Table 4: Status of Statewide Programs**

Location/ Project #	Scope Summary	Status	Obligated Funds
15680L	Research - Instrumentation, Digital Image Correl. & Modeling to Monitor Bridge Behavior & Condition	Active	\$13,067
26962F	Sustainable Transportation Funding	Withdrawn	\$0
8550	Various, SFY 2010-2011 SPR Program Part 1 & 3	Complete	(\$1,180,842)
14750	SPR Pooled - Fund Study (State of VA)	Complete	(\$544)
15262C	Research Contingencies	Complete	(\$899)
26962E	Structural Support for Tidal Energy Conversion at the Memorial Bridge	Active	\$0
40369	NHDOT SPR Part 1 Program for SFY 2016-2017 for NHDOT managed activities (No RPC Contracts)	Active	\$660,000
14947	TPF-5(065) Traffic Control Device (TCD) Consortium	Active	(\$5,752)
14282K	Spring Thaw Predictor and Load Restriction Methodology	Complete	(\$14,879)
14282S	Instrumentation for Local Calibration of the Mechanistic Empirical Pavement Design Guide (MEPDG)	Complete	(\$41,926)
15260C	Implementation of Research and Technology Transfer	Complete	(\$32,338)
15261B	AASHTO Technical Service Programs Authorized by FHWA for use of 100% Federal Funds	Complete	(\$2,773)
15261C	AASHTO Engineering Technical Service Programs Authorized by FHWA for 100% Federal Funds	Complete	(\$59,400)
15261D	AASHTO Technical Service Programs	Complete	\$0
15261E	AASHTO Technical Service Programs	Active	\$54,000
15262D	Contingencies	Active	(\$4,485)
15680B	Performance of High RAP Pavement Sections	Complete	\$18,652
15680P	Enhancements to NHDOT Rock Slope Inventory System	Complete	(\$13,656)
15680Q	Opportunity Screening of Mechanical Services and Fleet Management	Complete	\$0
15680R	Correlation Between Lab- and Plant-Produced High-RAP/RAS Mixtures	Active	\$16,975
15680S	Assessment of Reinforced Base Course	Active	\$7,950
26962A	Assessment of Asphalt Concrete Reinforcement Grid in Flexible Pavements	Active	\$6,850
26962B	Review of Best Practices for Addressing Asbestos in Bridge Decks	Complete	(\$6,401)
26962C	Laboratory Noise Mitigation to Enable Implementation of New Asphalt Binder Equipment	Active	\$111,378
26962D	Assessment of Cathodic Protection system on I-93	Active	\$11,586
40369A	SFY 2016-2017 Unified Planning Work Program (UPWP) Contracts with 9 RPCs (7/1/15-6/30/17)	Active	\$1,710,000
<b>Statewide Rec Trail Program [VARIOUS]</b>			
P8903O	National Recreation Trails funding for FY 2010	Complete	(\$711,043)
P8903P	National Recreation Trails funding for FY 2011	Complete	(\$667,994)
P8903Q	National Recreation Trails funding for FY 2012 [Annual Project #2570]	Complete	(\$36,261)
P8903R	Obligate FY2013 funds	Complete	(\$334,324)
Total Obligated Funds			\$ 15,556,533
Total De-obligated Funds			\$ 4,186,830
<b>Net Obligated Funds</b>			<b>\$ 11,369,702</b>

**TABLE 5: CART Federal Obligations FY15\***

<b>FTA Grants (#s)</b>	<b>Project Description</b>	<b>Federal</b>	<b>Local</b>	<b>Total</b>	<b>Status</b>
<b>NH-90-X202-00</b> <b>(FTA 5307)</b>	Preventive Maintenance	\$155,512	\$38,878	\$194,390	Active
	Operating Assistance	\$143,078	\$143,078	\$286,156	
	Planning	\$14,044	\$3,511	\$17,555	
	ADA Operating Assistance	\$32,300	\$8,075	\$40,375	
	<b>Total</b>	<b>\$344,934</b>	<b>\$193,542</b>	<b>\$538,476</b>	
<b>NH-90-X187-00</b> <b>(FTA 5307)</b>	Preventive Maintenance	\$5,200	\$1,300	\$6,500	Active
	Mobility Management	\$82,221	\$20,555	\$102,776	
	Operating Assistance	\$149,459	\$149,549	\$298,918	
	Planning	\$5,416	\$1,354	\$6,770	
<b>Total</b>	<b>\$242,296</b>	<b>\$172,668</b>	<b>\$414,964</b>		
<b>NH-16-X045-00</b> <b>(FTA 5310)</b>	Mobility Management	\$80,903	\$20,226	\$101,129	Active
	Purchase of Transportation Service	\$84,552	\$21,138	\$105,690	
	<b>Total</b>	<b>\$165,455</b>	<b>\$41,364</b>	<b>\$206,819</b>	
<b>NH-90-X195</b> <b>(FTA 5307)</b>	Mobility Management	\$221,360	\$55,340	\$276,700	Active
<b>NH-90-X180</b> <b>(FTA 5317)</b>	Rolling Stock	\$32,956	\$8,239	\$41,195	Active
<b>Total</b>		<b>\$1,007,001</b>	<b>\$471,153</b>	<b>\$1,478,154</b>	

\*FTA Transit grants cover multiple fiscal years and the funds listed in this table are not all spent in a single year.

**TABLE 6: Wildcat Transit Federal Obligations FY15\***

<b>FTA Grants (#s)</b>	<b>Project Description</b>	<b>Federal</b>	<b>Local</b>	<b>Total</b>	<b>Status</b>
<b>NH-90-X201-00</b> <b>(FTA 5307)</b>	Fleet Replacement	\$420,000	\$84,000	\$504,000	Active
<b>NH-95-X018-02</b> <b>(CMAQ)</b>	Operating Assistance	\$192,737	\$38,547	\$231,284	Active
<b>NH-90-X195-00</b> <b>(CMAQ)</b>	Operating Assistance	\$210,588	\$42,188	\$252,706	Active
<b>Total</b>		<b>\$823,325</b>	<b>\$164,665</b>	<b>\$987,990</b>	

\*FTA Transit grants cover multiple fiscal years and the funds listed in this table are not all spent in a single year.

**Table 7: COAST Federal Obligations FY15\***

<b>FTA Grants (#s)</b>	<b>Project Description</b>	<b>Federal</b>	<b>Local</b>	<b>Total</b>	<b>Status</b>
<b>NH-90-X162-00 (FTA 5307)</b>	Preventive Maintenance	\$413,522	\$103,381	\$516,903	Active
	ADA Operations	\$150,000	\$37,500	\$187,500	
	Operating Assistance	\$900,000	\$900,000	\$1,800,000	
	Planning	\$50,000	\$12,500	\$62,500	
	Bus: Support Equipment & Facilities	\$25,000	\$6,250	\$31,250	
	<b>Total</b>	<b>\$1,538,522</b>	<b>\$1,059,631</b>	<b>\$2,598,153</b>	
<b>NH-90-X176-00 (FTA 5307)</b>	Preventative Maintenance	\$425,000	\$106,250	\$531,250	Active
	ADA Operations	\$120,000	\$30,000	\$150,000	
	Operating Assistance	\$750,000	\$750,000	\$1,500,000	
	Fuel for Vehicle Maintenance	\$218,765	\$54,691	\$273,456	
	Bus: Support Equipment & Facilities	\$27,672	\$6,907	\$34,534	
	<b>Total</b>	<b>\$1,514,392</b>	<b>\$947,848</b>	<b>\$2,489,240</b>	
<b>NH-90-X145-00 (FTA 5307)</b>	NFI Projects - Operating	\$50,117	\$50,117	\$100,234	Active
	NFI Projects - Mobility Management	\$176,783	\$44,196	\$220,979	
	<b>Total</b>	<b>\$226,900</b>	<b>\$94,313</b>	<b>\$321,213</b>	
<b>NH-90-X170-00 (FTA 5307)</b>	Preventative Maintenance	\$500,000	\$125,000	\$625,000	Active
	ADA Operations	\$180,000	\$45,000	\$225,000	
	Rolling Stock – Bus	\$264,000	\$66,000	\$330,000	
	Operating Assistance	\$1,000,000	\$1,000,000	\$2,000,000	
	Bus: Support Equipment & Facilities	\$69,383	\$17,346	\$86,729	
	<b>Total</b>	<b>\$2,013,383</b>	<b>\$1,253,346</b>	<b>\$3,266,729</b>	
<b>NH-90-X155-00 (FTA 5307)</b>	Preventative Maintenance	\$502,985	\$125,746	\$628,732	Active
	ADA Operations	\$67,200	\$16,800	\$84,000	
	Operating Assistance	\$1,129,200	\$1,129,200	\$2,258,400	
	Planning	\$82,400	\$20,600	\$103,000	
	Bus: Support Equipment & Facilities	\$24,800	\$6,200	\$31,000	
	<b>Total</b>	<b>\$1,806,585</b>	<b>\$1,298,546</b>	<b>\$3,105,132</b>	
<b>NH-90-X173-00 (CMAQ)</b>	Operating Assistance (80% CMAQ)	\$612,239	\$153,060	\$765,299	Active
	TDM Activities (80% CMAQ)	\$28,000	\$7,000	\$35,000	
	<b>Total</b>	<b>\$640,239</b>	<b>\$160,060</b>	<b>\$800,299</b>	
<b>NH-90-X159-04 (FTA 5307)</b>	NFI Projects - Operating	\$64,147	\$64,147	\$128,294	Active
	NFI Projects - Mobility Management	\$540,042	\$135,011	\$675,053	
	NFI Projects – Rolling Stock – Bus	\$357,821	\$89,455	\$447,276	
	JARC Projects – Mobility Management	\$46,625	\$11,656	\$58,281	
	<b>Total</b>	<b>\$1,008,635</b>	<b>\$300,269</b>	<b>\$1,308,904</b>	
<b>NH-95-X011-01 (FTA 5307)</b>	35-FT Bus for Expansion	\$1,386,592	\$346,648	\$1,733,240	Active
	30-FT Bus for Expansion	\$608,000	\$152,000	\$760,000	
	Operating Assistance (80% CMAQ)	\$1,172,772	\$293,195	\$1,436,967	
	<b>Total</b>	<b>\$3,167,364</b>	<b>\$791,843</b>	<b>\$3,959,207</b>	

<b>FTA Grants (#s)</b>	<b>Project Description</b>	<b>Federal</b>	<b>Local</b>	<b>Total</b>	<b>Status</b>
<b>NH-90-X194-00 (FTA 5307)</b>					Active
	Preventive Maintenance	\$313,000	\$78,250	\$391,250	
	ADA Operations	\$83,000	\$20,750	\$103,750	
	Operating Assistance	\$807,000	\$807,000	\$1,614,000	
	Planning	\$19,837	\$4,960	\$24,797	
	Total	<b>\$1,222,837</b>	<b>\$910,960</b>	<b>\$2,133,797</b>	
<b>NH-04-0007-00</b>	Project Administration	\$29,440	\$7,360	\$36,800	Active
	Signal and Communications Equipment	\$69,920	\$17,480	\$87,400	
	Support Equipment and Facilities	\$224,640	\$56,160	\$280,800	
	Total	<b>\$324,000</b>	<b>\$81,000</b>	<b>\$405,000</b>	
<b>NH-90-X184-00 (CMAQ)</b>	Public Outreach/TDM Activities (80% CMAQ)	<b>\$219,511</b>	<b>\$54,878</b>	<b>\$274,389</b>	Active
<b>NH-90-X186-00 (CMAQ)</b>	Operating Assistance (80% CMAQ)	<b>\$237,719</b>	<b>\$59,430</b>	<b>\$297,149</b>	Active
<b>NH-95-X017-00 (CMAQ)</b>	Public Outreach/TDM Activities (80% CMAQ)	<b>\$112,489</b>	<b>\$28,122</b>	<b>\$140,611</b>	Active
<b>NH-04-X0012-00</b>	<30 Ft. Bus (2) for Replacement	<b>\$112,050</b>	<b>\$28,013</b>	<b>\$140,063</b>	Active
		<b>\$16,219,837</b>	<b>\$6,481,318</b>	<b>\$22,701,156</b>	

\*FTA Transit grants cover multiple fiscal years and the funds listed in this table are not all spent in a single year.