

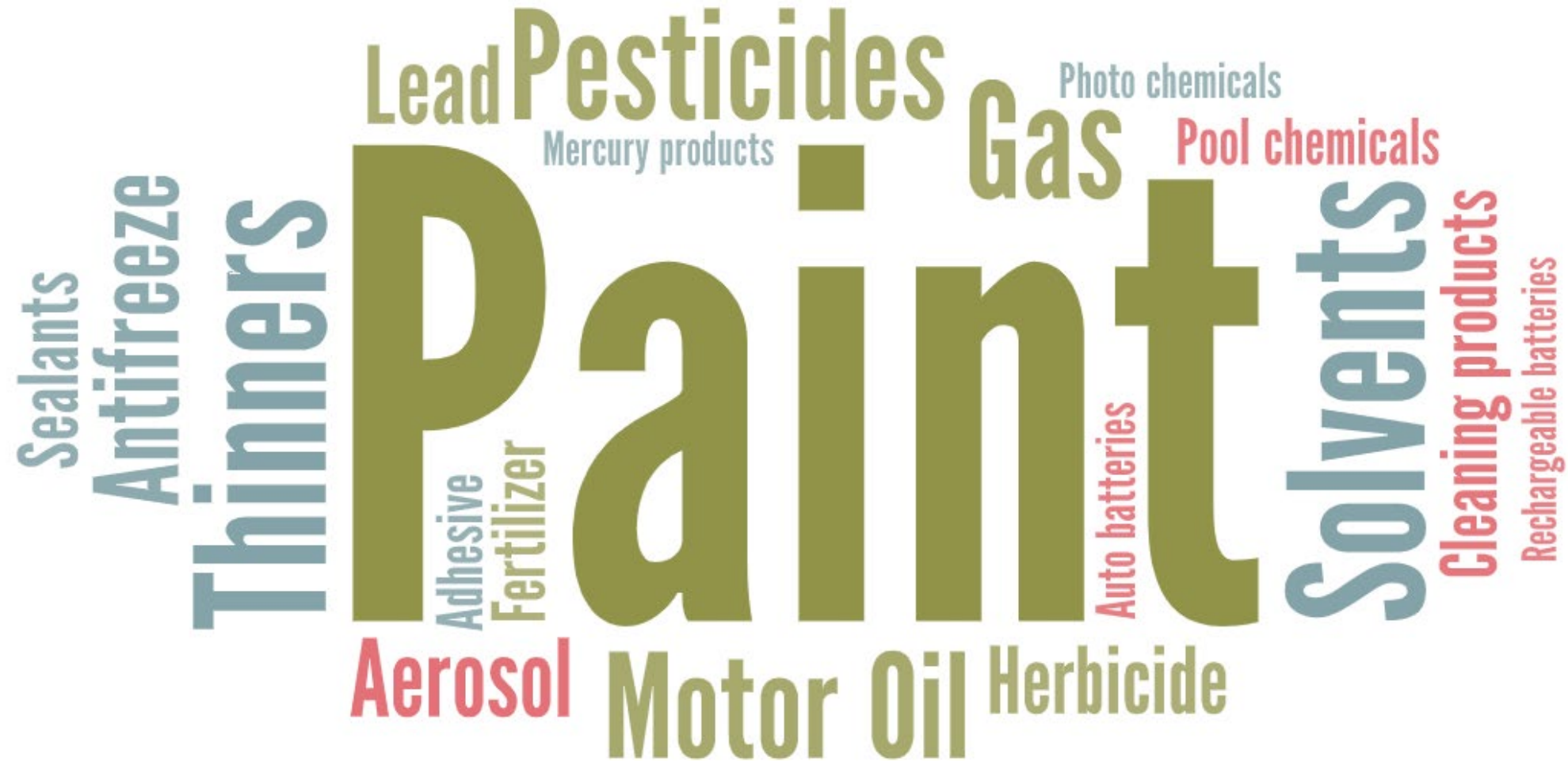


# HOUSEHOLD HAZARDOUS WASTE FEASIBILITY STUDY

Rockingham Planning Commission



# What is Household Hazardous Waste?

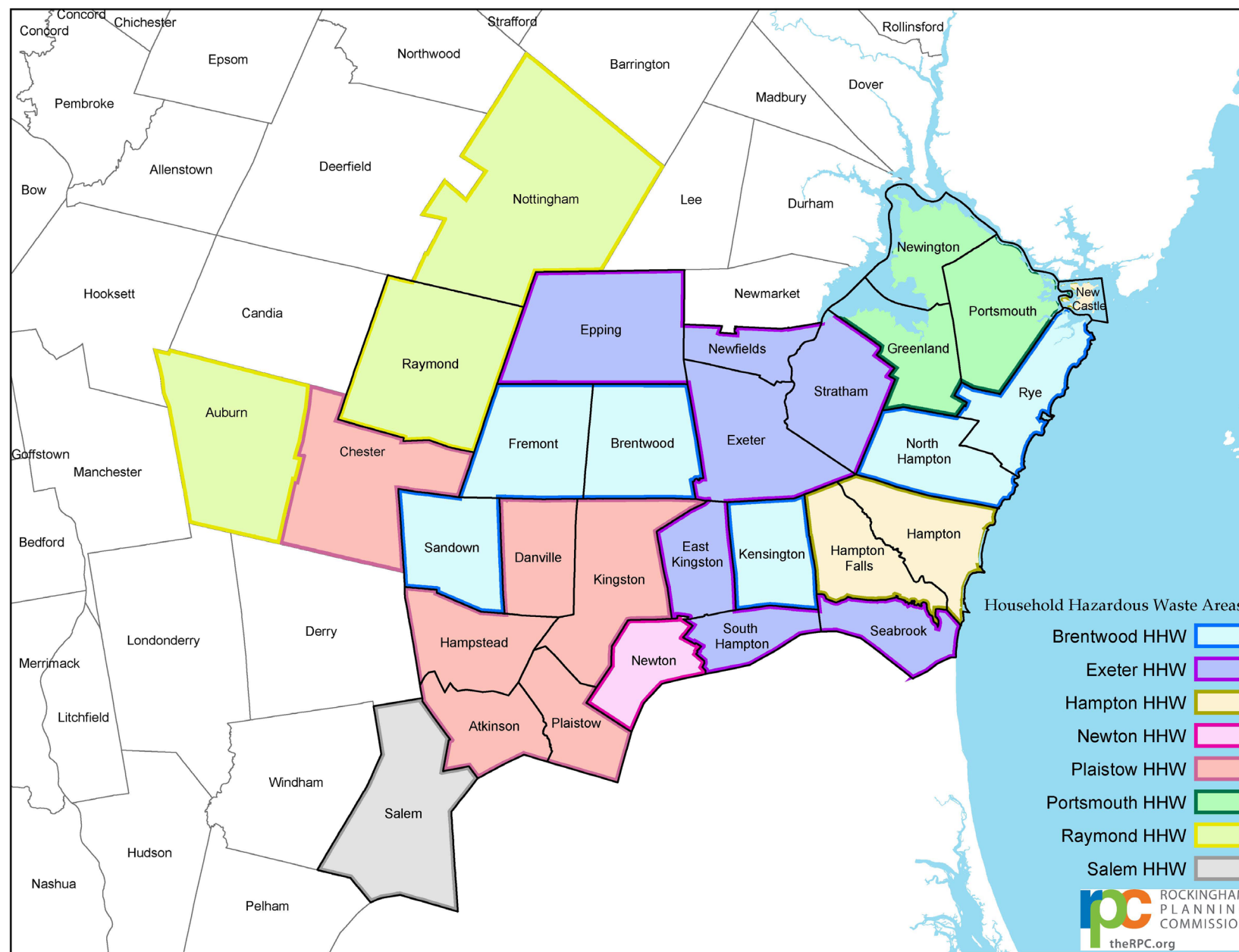
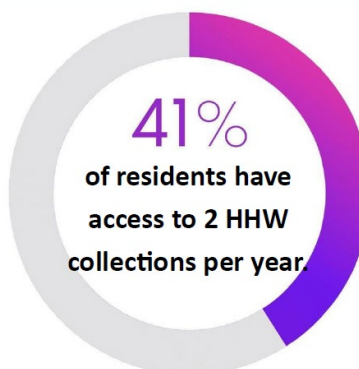
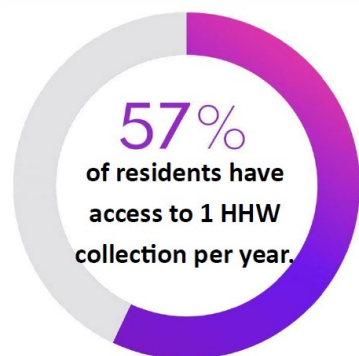




# Why It Matters







# Current Snapshot

- 10 single day collections each year (11 every other year).
- No collections in January, February, March, June, July, August, November, or December.
- Exeter Area Collection and Hampton Falls have user fees.
- Brentwood only event operating under formal governance structure.
- No opportunities for Very Small Quantity Generators.

# 2024 HHW Statistics for RPC Region

- 3,428 = # of households that participated in a collection
- \$366,543.96 = total spent on HHW disposal
- \$33,322.18 = average cost of a collection event
- \$106.93 = average cost per participating household

# HHW Collection Methods



SINGLE-DAY  
COLLECTION EVENTS



PERMANENT HHW  
COLLECTION FACILITY



CURBSIDE HHW  
COLLECTION



# SINGLE DAY COLLECTION EVENTS



# Pros of Single-Day Collection Events



- Set dates can provide motivation
- Manageable Cost
- Sustainable
- Limited Liability
- Easy to Implement
- Politically Acceptable
- Easy to Promote

# Cons of Single-Day Collection Events



- High Cost
- Limited Participation
- Event Limitations
- Weather Dependent
- Safety/Liability at the Events
- Safety at Households
- Inconvenient
- No Ongoing Educational Opportunities



# Permanent HHW Collection Facility



Fresno County, CA Permanent HHW Facility



# Permanent HHW Collection Facilities



Left: San Bernadino County, CA Permanent HHW Facility  
Top Right: Los Angeles, CA HHW Collection Facility  
Bottom Right: HazWaste Center, Middlebury, VT





# Permanent HHW Collection Facilities



Left: North Seattle HHW Collection Facility  
Top Right: Santa Cruz County, CA HHW Collection Facility  
Bottom Right: Winona County, MN HHW Facility



# Pros of a Permanent HHW Collection Facility



- Convenient
- Higher participation rates
- More opportunities for reuse
- Ongoing Education
- Not Weather Dependent
- Safety at Households
- Safety/Liability at the Facility
- Lower Cost

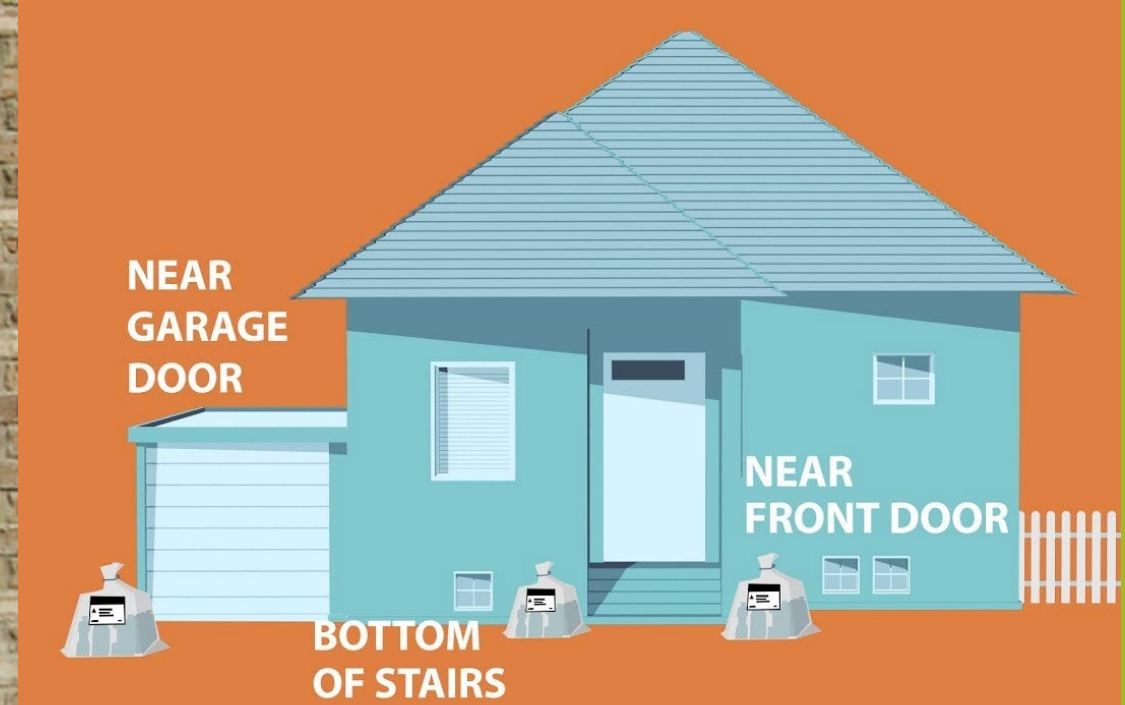


# Cons of a Permanent HHW Collection Facility



- Capital Costs
- Operating Budget
- Driving Distance
- Siting

# Curbside HHW Collection





# Pros of Curbside HHW Collection



- Most Convenient Option
- No Transportation Required
- Immediate Implementation
- Turnkey Service
- Individual Contracts
- Ongoing Education
- Higher participation rate than single day events
- Relatively low cost per household

# Cons of Curbside HHW Collection



- Lower participation rate than permanent facilities.
- Residential Participation Only
- No Public Investment
- Not eligible for DES HHW grant funding.
- All residents in a participating municipality must pay into the program.



# Feasibility Analysis

Market Feasibility—50%

Technical Feasibility—20%

Financial Feasibility—20%

Governance Feasibility—10%

# Technical Feasibility Questions

- How difficult would it be to quickly implement this option?
- How difficult would it be to find a site for this option?
- How difficult would it be to find a vendor with the technical expertise to operate this option?
- How difficult would it be to find a vendor who has the capacity/availability to implement this option?
- How difficult would it be to hire and train municipal staff needed for this option?



# Financial Feasibility Questions

- How does the annual cost for this option compare to what municipalities currently spend on HHW?
- How likely is it that grant funding is available to support this option?
- How easily can costs be predicted and managed with this option?

# Governance Feasibility Questions

- Does this option require a critical mass of municipalities to participate?
- Does this option require a governance agreement among participating municipalities?
- Would appropriations for this option be part of a town's annual operating budget or would it require an independent warrant article at town meeting?



# Market Feasibility Questions

- How much support is there for this option among residents and municipalities?
- Does this option typically have better participation rates than what is currently available?
- Is this option more convenient and safer for residents than what is currently available?
- Does this option allow for the program to expand?

Question	2025 Regional Plan Survey (902 responses)	2025 Municipal Officials Survey (20 responses)	2025 Exeter HHW Survey (400 responses)
Would you like additional opportunities to dispose of HHW?	Yes = 63% No = 22% Unsure = 15%	N/A	Yes = 74% No = 26%
Would more single-day collection events from April-October be beneficial?	Yes = 33%	Yes = 63% No = 6% Unsure = 32%	Yes = 55%
Would a year-round, permanent HHW facility be beneficial?	Yes = 68%	Yes = 65% No = 24% Unsure = 12%	Yes = 58%
If a few sites could be identified, would you like to see a detailed cost estimate for constructing and operating a permanent facility?	N/A	Yes = 100% No = 0%	N/A
Would curbside HHW collection be beneficial?	Yes = 22%	Yes = 25% No = 50% Unsure = 25%	Yes = 17%



**Recommendation**—move forward with the establishment of a permanent HHW collection facility in the region

Method	Market Feasibility Score (50%)	Technical Feasibility Score (20%)	Financial Feasibility Score (20%)	Governance Feasibility Score (10%)	Total
Add Single Day Collection Events	1.50	0.84	0.74	0.45	3.53
Establish a Permanent HHW Collection Facility	2.30	0.66	0.64	0.28	3.88
Implement Curbside HHW Collection	1.50	0.66	0.40	0.43	2.99

# Short Term Steps

- Secure funding to develop a Permanent Facility Program report.
- Conduct additional outreach to municipal staff and elected officials.
- Reassess which municipalities are interested in participating in a permanent HHW facility.
- Identify up to 3 potential sites.



# Medium Term Steps

- Research and write the Permanent Facility Program report.
- Secure funding for and hire a design firm to develop a conceptual design and conduct site assessments (if needed).
- Conduct public outreach.

# Long Term Steps

- Issue a RFP for permanent facility design-build proposals and evaluate proposals.
- Establish required governance agreements.
- Secure funding for the permanent facility.
- Hire building contractor and construct the permanent facility.
- Issue a RFP for a HHW vendor, evaluate proposals, and hire vendor.
- Hire and train municipal staff for the facility.
- Open and operate the permanent facility.





Jill Longval, [jlougval@therpc.org](mailto:jlougval@therpc.org)